

Innovation Management

The Innovation Management enables you to gather and evaluate ideas efficiently, and to quickly identify and process the ideas with the greatest potential for implementation.

The Idea Portal accelerates and organizes idea gathering, evaluation, selection, and execution. The idea manager or demand manager evaluates submitted ideas and promotes accepted ideas to demands, epics, features, or stories.

Maintain separate data storage and control access

You can use the Idea module to do the following:

- Store ideas and categories belonging to different departments, products, or business units separately.
- Store and organize ideas, enable voting, and, if your organization is large, you can configure different portal pages with unique sets of categories, for example, for HR, IT, and Support.
- Control access, allowing only the users of a specific business unit or department to submit and view ideas belonging to a specific category through the Idea Portal by creating [access-control lists](#) in the table that you want to use for categories. For example, if you do not want users outside the Payroll department to view the ideas associated with the category Salary, create ACLs with read access, at least, to the employees of Payroll department in the parent table that is used to derive the category Salary. The ACLs restrict the employees outside the Payroll department from viewing the ideas associated with the category Salary. For more information, see [Create an Idea module](#).

Note: Innovation Management supports basic level of domain separation. For more information about domain separation, see [Application support for domain separation](#) and [Domain separation and Project Portfolio Management](#).

Organize idea submissions by using categories

An idea category represents a theme for organizing idea submissions. All ideas submitted through the Idea Portal must be associated with at least

one idea category. You can use values from an existing table or create new idea categories for organizing your idea. Users select one or more idea categories, configured by an admin, to associate with their idea when they submit it. For more information, see [Create an Idea module](#), and [Idea category configuration](#).

Submit, view, and subscribe to ideas

The Idea Portal is where you share your product, feature, change, or enhancement ideas. Submit your ideas, view and subscribe to the ideas of other users, and track the progress of a subscribed idea. For more information, see [View, filter, and sort ideas](#) and [Collaborate on ideas](#).

Collaborate on ideas

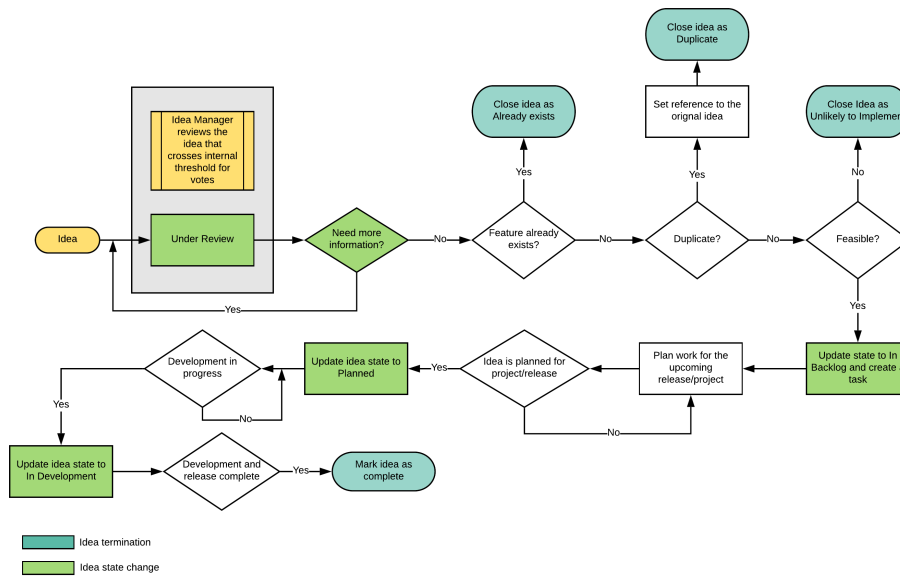
Collaborate on an idea with other submitters and stakeholders. Add comments or reply to comments to request more information or answer questions. Vote for the ideas you would like to see developed. For more information, see [Collaborate on ideas](#).

Manage and evaluate ideas

The idea manager reviews submitted ideas and, if necessary, requests more information, and then chooses to accept or reject the idea. The number of votes on an idea helps in assessing the popularity of and demand for the idea. For more information, see [Manage ideas](#).

Convert the accepted ideas to a demand, epic, story, or feature based on how you would like to execute your idea. Use relevant options such as Epic, SAFe epic, or Improvement initiative based on the plugins installed such as PPM Standard, Agile Development 2.0 and Scaled Agile Framework (SAFe). After creating a demand or a project, change the state of the idea to track its status during different stages of development. For more information, see [Evaluate an idea](#).

Idea workflow



- Migrating from the legacy Ideas application to Idea Portal

If you are upgrading to the Washington DC release, complete the migration tasks after the upgrade to start using the new Idea Portal.

- Idea Portal administration

Idea Portal enables end users to view, submit, filter, sort, comment, and vote on ideas. Idea managers use the Idea Portal to review, evaluate, collaborate on, and manage ideas. An idea admin configures an Idea module, maps idea categories to the Idea module, and adds navigation for the Idea Portal page.

- Adding Idea Portal to Employee Center

Improve engagement experience for your employees by enabling navigation to Idea Portal from Employee Center.

- Using Idea Portal

The Idea Portal is your central location to collect, curate, and promote ideas into demand, project, epic, or story. It enables integration of key